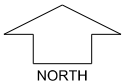


**°CELSIUS**  
LIVING



SCALE 1:250

MNG. Ref: 105055lip-007a Date: 08/10/2024  
All dimensions and areas are subject to survey. The particulars on this brochure are supplied for information only and shall not be taken as a representation in any respect on the part of the Vendor or its agent. Authorities should be consulted when services are contained within lot boundaries as building restrictions may apply. All retaining walls and associated easements are shown exaggerated for clarity.  
Engineering still to be finalised and subject to change.

**LEGEND**

- |                               |                                |                    |
|-------------------------------|--------------------------------|--------------------|
| WATER                         | POWER DOME MINI PILLAR         | DRAINAGE           |
| WATER METER BELOW GROUND      | POWER DOME UNIVERSAL PILLAR    | TOP OF KERB HEIGHT |
| WATER METER                   | STREETLIGHTS                   | SPOT LEVEL         |
| WATER HYDRANT                 | PADMOUNT SITE                  | PAD LEVEL          |
| WATER VALVE                   | NATIONAL BROAD BAND CONNECTION | ROAD LEVEL         |
| RETAINING WALL & HEIGHT       | SEWER / MANHOLE                | GAS CONNECTION     |
| GRASLINE PLINTH WALL & HEIGHT | GARAGE LOCATION                | RETAINED TREE      |
|                               |                                | FOOTPATH           |