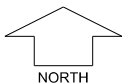


**°CELSIUS**  
LIVING



SCALE 1:250

MNG. Ref: 105055lip-007c Date: 05/02/2025  
 All dimensions and areas are subject to survey. The particulars on this brochure are supplied for information only and shall not be taken as a representation in any respect on the part of the Vendor or its agent. Authorities should be consulted when services are contained within lot boundaries as building restrictions may apply. All retaining walls and associated easements are shown exaggerated for clarity.  
 Engineering still to be finalised and subject to change.

**LEGEND**

- |  |                                   |  |                                |  |                    |
|--|-----------------------------------|--|--------------------------------|--|--------------------|
|  | WATER                             |  | WATER METER BELOW GROUND       |  | DRAINAGE           |
|  | WATER METER                       |  | POWER DOME MINI PILLAR         |  | TOP OF KERB HEIGHT |
|  | WATER HYDRANT                     |  | POWER DOME UNIVERSAL PILLAR    |  | SPOT LEVEL         |
|  | WATER VALVE                       |  | STREETLIGHTS                   |  | PAD LEVEL          |
|  | UNIFORM FENCING ON RETAINING WALL |  | PADMOUNT SITE                  |  | ROAD LEVEL         |
|  | RETAINING WALL & HEIGHT           |  | NATIONAL BROAD BAND CONNECTION |  | GAS CONNECTION     |
|  | GRAMLINE PLINTH WALL & HEIGHT     |  | SEWER / MANHOLE                |  | RETAINED TREE      |
|  | ACCESS RESTRICTION                |  | GARAGE LOCATION                |  | FOOTPATH           |