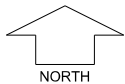


**°CELSIUS**  
LIVING

**STAGE 2**  
SCALE 1:250



MNG. Ref: 105055lip-019b Date: 06/03/2026  
All dimensions and areas are subject to survey. The particulars on this brochure are supplied for information only and shall not be taken as a representation in any respect on the part of the Vendor or its agent. Authorities should be consulted when services are contained within lot boundaries as building restrictions may apply. All retaining walls and associated easements are shown exaggerated for clarity.  
Engineering still to be finalised and subject to change.

**LEGEND**

- |  |                                   |  |                               |  |                    |
|--|-----------------------------------|--|-------------------------------|--|--------------------|
|  | WATER                             |  | POWER DOME MINI PILLAR        |  | DRAINAGE           |
|  | WATER METER                       |  | POWER DOME UNIVERSAL PILLAR   |  | TOP OF KERB HEIGHT |
|  | WATER HYDRANT                     |  | STREETLIGHTS                  |  | SPOT LEVEL         |
|  | WATER VALVE                       |  | TRANSFORMER SITE              |  | PAD LEVEL          |
|  | UNIFORM FENCING ON RETAINING WALL |  | NATIONAL BROADBAND CONNECTION |  | ROAD LEVEL         |
|  | RETAINING WALL & HEIGHT           |  | SEWER / MANHOLE               |  | GAS CONNECTION     |
|  | GRAMLINE PLINTH WALL & HEIGHT     |  | GARAGE LOCATION               |  | RETAINED TREE      |
|  |                                   |  | ACCESS RESTRICTION            |  | FOOTPATH           |